



SMART LANE EMERGENCY GATE

The Smart Lane Emergency Gate (SLEG) is an Intelligent Transportation Systems (ITS) device suitable for automated control of:

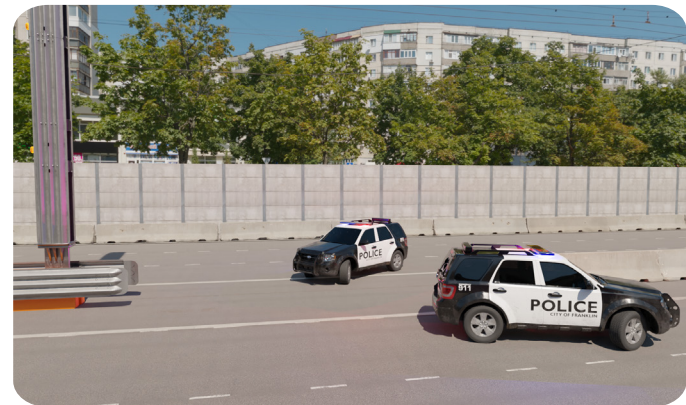
- Emergency Turnaround Access
- HOV / Managed / Reversible Lanes
- Road and Tunnel Closures

The SLEG is an automated barrier gate that is typically installed within a stretch of road barriers separating opposing lanes of traffic. When closed, the SLEG acts as a TL3 rated motorway barrier, and can be opened remotely to allow turnaround access as required at strategic locations.

With an opening length of up to 49.2ft (15m), the SLEG provides ample room for emergency or other authorized vehicles to pass through.

The SLEG is used to enable fast access for emergency situations where vehicles would otherwise have to travel significant distances to the nearest safe turnaround location.

The SLEG provides Authorities the ability to execute critical changes to the roadway configuration, delivering greater efficiency, increased flexibility, and more effective incident management. This significantly reduces response times for Emergency Services.



EMERGENCY ACCESS



RAPID INCIDENT MANAGEMENT



INCREASED ROADWAY FLEXIBILITY



**REDUCED RESPONSE TIMES FOR
EMERGENCY SERVICES**



MASH TL3 COMPLIANT

BENEFITS/FEATURES

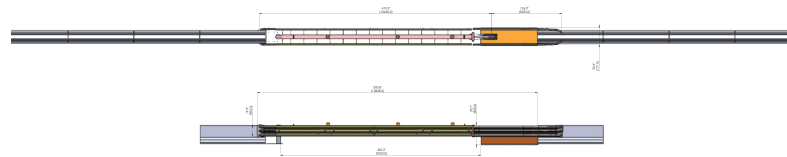
- Fast emergency access (opens in seconds)
- Acts as a crash-rated road barrier when closed.
- Crash Tested to MASH TL3, the SLEG provides unparalleled levels of safety.
- Controllable via external control centre, local interface, or remote control.
- Warning lights and obstruction sensors ensure safe operation.
- Standalone PLC based industrial control system for higher safety and reliability.
- Industry standard communication interfaces for control and monitoring from any third-party control system.
- Integrates directly with Traffic Tech's Smart Lane Traffic Management Solutions, ITS Subsystems, and Expanse Integrated Road Systems.



TRAFFIC TECH

TECHNICAL OVERVIEW

Total Opening Length:	Specific to Application: 16.4ft (5m) to 49.2ft (15m)
Barrier Gate Material:	Galvanised Steel
Mechanical Design Life:	20 Years
Control Type:	External Control Centre, Local Interface, or Remote Control
Opening/Closing Time:	30 to 50 seconds (Length dependent)
Drive Motor Type:	Electric Motor
Voltage:	400 – 415 VAC
Drive Motor Control:	Variable Speed



ABOUT TRAFFIC TECH

Traffic Tech is a specialist provider of Intelligent Transportation Systems (ITS) products and solutions to global markets.

Our Smart Lane range of traffic management solutions provides key value for:

- Departments of Transportation / Toll Authorities
- Road Asset Owners / Operators
- Construction Groups / Major Project Consortia / Engineering Contractors
- Airports / Military Installations / Ports

If you have an ITS challenge you'd like help with, please reach out. We'd love to hear from you.



TRAFFIC TECH

Asia Pacific:

📍 Level 35, International Tower One,
100 Barangaroo Ave, Sydney
NSW 2000, Australia
☎ +61 2 8114 4453
✉ salesap@trafficechits.com
🌐 www.trafficechits.com

North America:

📍 17 State St, 40th Floor,
New York, NY 10004 USA
☎ +212 739 0826
✉ salesna@trafficechits.com
🌐 www.trafficechits.com

