

SMART LANE MOVABLE BARRIER

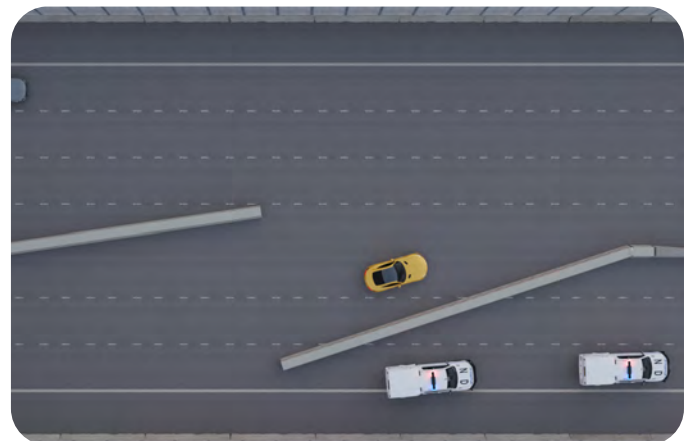
The Smart Lane Movable Barrier (SLMB) is an Intelligent Transportation Systems (ITS) device suitable for the control of:

- Contraflow or Tidal Flow
- HOV / Managed / Reversible Lanes
- Road, Tunnel, and Lane Closures

The SLMB is an automated road barrier that can move across the road surface. Configurable in lengths of up to 984ft (300m), Traffic Tech's SLMB is designed to be installed at specific locations to provide crash rated levels of safety, whilst allowing flexible deployment to direct traffic as required.

Standalone or part of a wider system, the SLMB can be configured to address time-of-day deployment, incident response, and other operational requirements. This provides a safer solution that avoids the need for site crews and their vehicles on the roadway.

Ready for evolving traffic conditions, the SLMB can be deployed in a matter of seconds. This provides Authorities the ability to execute critical changes to the roadway configuration, delivering greater efficiency, increased flexibility, and more effective incident management.



LANE CONTROL AND CONFIGURATION



SAFE CLOSURES AND DIVERSIONS



RAPID INCIDENT MANAGEMENT



INCREASED ROADWAY FLEXIBILITY



ROAD / TUNNEL / BRIDGE MAINTENANCE



MASH TL3 COMPLIANT

BENEFITS/FEATURES

- Automated lane configuration, contraflow, or tidal flow, removing the need for road crews and their vehicles.
- Automated road and tunnel closures for rapid and reliable traffic redirection.
- Crash Tested to MASH TL3, the SLMB provides unparalleled levels of safety.
- Smart positioning system for reliable and accurate operation.
- Reflective aspects, lights, and chevrons for improved visibility and traffic control.
- Standalone PLC based industrial control system for higher safety and reliability.
- Industry standard communication interfaces for control and monitoring from any third-party control system.
- Integrates directly with Traffic Tech's Smart Lane Traffic Management Solutions, ITS Subsystems, and Expanse Integrated Road

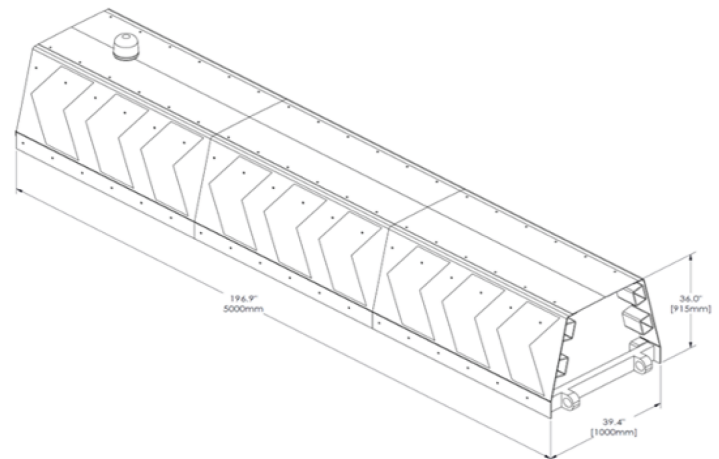
ABOUT TRAFFIC TECH



TRAFFIC TECH

TECHNICAL OVERVIEW

Total Barrier Length:	49.2ft (15m) to 984ft (300m)
Module Dimensions:	196.9" (L) x 39.4" (W) x 36.0" (H) 5000mm (L) x 1000mm (W) x 915mm (H)*
Module Material:	Galvanised Steel
Module Finish:	3 Part Epoxy White Paint
Mechanical Design Life:	20 Years
Opening Time per Lane:	Configurable: 20-45 Seconds
Drive Motor Type:	Electric Motor
Voltage:	400-415 VAC
Drive Motor Control:	Servo Drive



Traffic Tech is a specialist provider of Intelligent Transportation Systems (ITS) products and solutions to global markets.

Our Smart Lane range of traffic management solutions provides key value for:

- Departments of Transportation / Toll Authorities
- Road Asset Owners / Operators
- Construction Groups / Major Project Consortia / Engineering Contractors
- Airports / Military Installations / Ports

If you have an ITS challenge you'd like help with, please reach out. We'd love to hear from you.



Asia Pacific:

📍 Level 35, International Tower One,
100 Barangaroo Ave, Sydney
NSW 2000, Australia
☎ +61 2 8114 4453
✉ salesap@trafficechits.com
🌐 www.trafficechits.com

North America:

📍 17 State St, 40th Floor,
New York, NY 10004 USA
☎ +212 739 0826
✉ salesna@trafficechits.com
🌐 www.trafficechits.com

